

**Deaf & Hard
of Hearing**
corner

Communication and Language Plan



Welcome to The Corner!



As a Teacher of the Deaf and certified Early Intervention Developmental Specialist with over 20 years of experience, I am dedicated to supporting families in navigating their child's hearing journey. My work focuses on supporting families understand their child's hearing levels, use of assistive technology, connecting with the Deaf community, communication and language development, and achieving all developmental milestones. One of the key tools in fostering effective communication and language development, is developing a communication and language plan. Learning to balance sign language and auditory development can get complicated. Lets make an easy to follow plan!

Use the download to work with your Early Intervention provider(s) to create a plan that will fit the needs of your DHOH child and family to optimize language development for your child.

Tiffany Snow

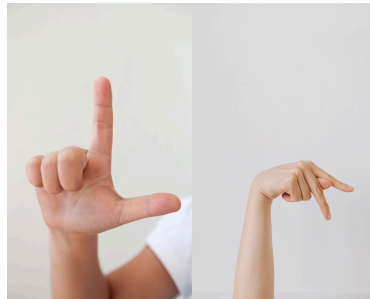
Tiffany Snow, MA TOD CEIS
Founder & Owner of The DHOH Corner

Why is a language plan important?

Without a structured language plan, Deaf and Hard Of Hearing children can experience reduced access to language and develop **language deprivation**. This can lead to life long delays in social and emotional skills and cognition, impacting academic skills and mental health. To develop a language plan we start with understanding some key concepts. What is **accessible language** ? What is **language deprivation**?

What is accessible language?

- Accessible language for a DHOH child means ensuring clear and understandable communication and language. It is important to consult with your child's Audiologist, Teacher of the Deaf, Speech Therapist, and Deaf Specialist, and determine how much spoken language is accessible through hearing technology with your child's specific hearing levels.
- The most accessible language to a DHOH child is American Sign Language. Learning American Sign Language provides all DHOH children and families with accessible language and connections with the DHOH community/peers, which helps your child to develop more than just language.
- Assistive listening devices like hearing aids and cochlear implants are great tools to access spoken language. When devices are worn all waking hours paired with appropriate services, many DHOH children are very successful spoken language learners.
- It is important to note that hearing technology alone should not be considered providing a child with access to language. Accommodations in their environment both for auditory and visual access are important to always consider.



What is Language Deprivation?



Language deprivation occurs due to a chronic lack of full access to a natural language during the critical period of language acquisition. Typically this is during the first five years of life. For some degrees of hearing differences hearing technology alone will not provide them with full access to language.

To support access to spoken language Hearing Aids and Cochlear Implants can provide an increased gain in auditory information. All hearing technology should be worn all waking hours to provide optimal access.



For the success of overall development and reduction in language deprivation, access to visual and spoken language should be offered and discussed. Knowledge of your child's specific level of hearing difference and how much spoken language they have access to, how to use and maintain their hearing device(s), and learning American Sign Language along side them will reduce language deprivation. Developing a Language Plan help you balance all languages.

HOW?

5 Easy Steps

01

With support of your early intervention provider discuss communication and language opportunities most appropriate for your child's access.

02

Determine resources and other agencies to support your family access/learn the Language Opportunities chosen.

03

Make a plan to include other family members such as Siblings and extended family in your learning process .

04

Remember a Language plan is always evolving with your child's language successes. Change it as often as you need.

05

Fill out the next form to incorporate your chosen language opportunities into your daily routines.

DAILY LANGUAGE ROUTINE

BREAKFAST

We use voice off asl as a family during breakfast every morning.

PLAYTIME

DIAPER CHANGE

OUTDOOR PLAY

LUNCH TIME

DINNER

BATH TIME

STORYTIME

EARLY
INTERVENTION
SESSION

OTHER

DAILY LANGUAGE ROUTINE

[illegible]